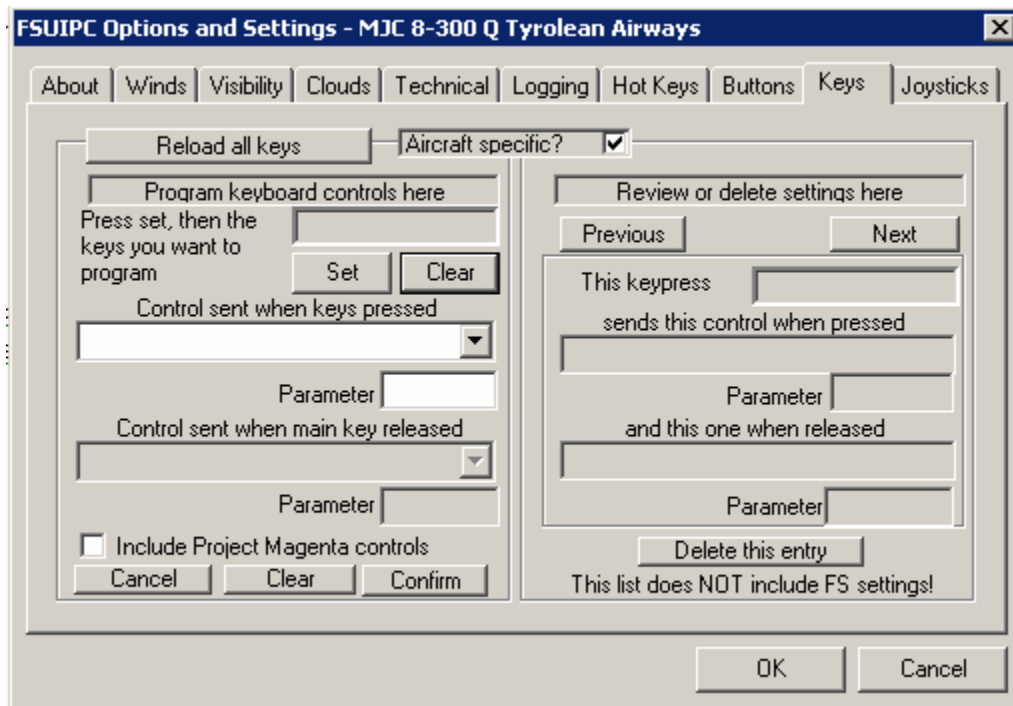


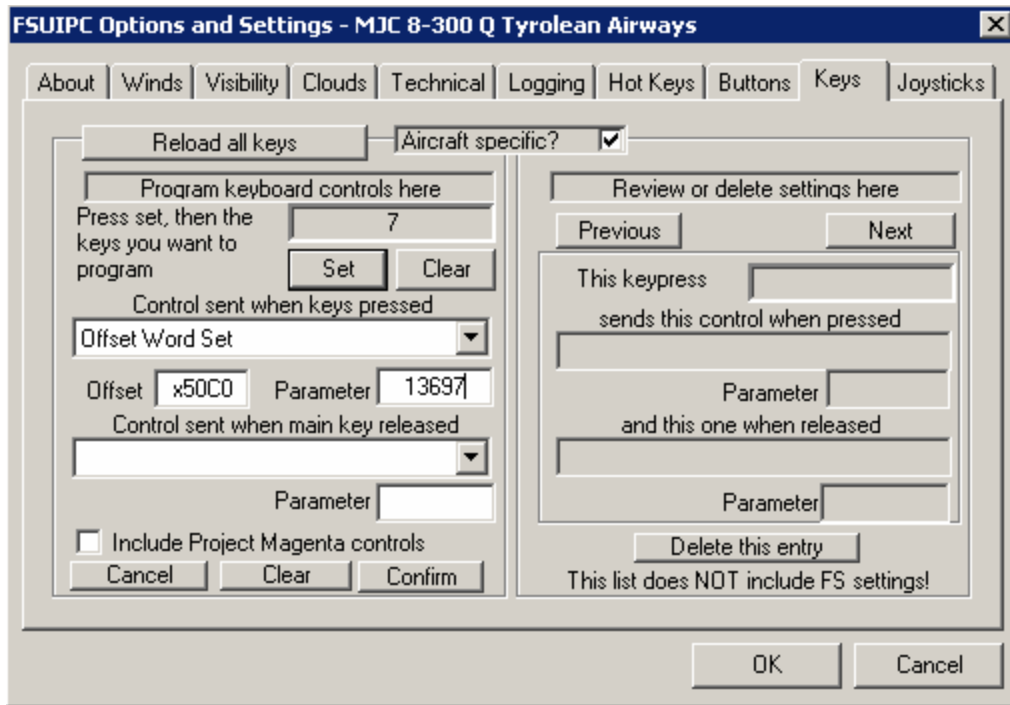
Dash8 Q300 Pro cockpit interface tutorial

Assigning a “Num 7” key to trigger the Autopilot Yaw Dumper button using FSUIPC

- Make sure the “EPIC=1” is set in the dhc8f300.ini file in order to enable the interface.
- Select the Dash-8 aircraft in the MSFS. Open the FSUIPC Keys page via modules->FSUIPC menu



- select the “aircraft specific” checkbox;
- press “Set” button, then press the “7” key on a numeric keyboard
- in the “Control sent...” select box, select the “offset Word Set” entry;
- in the “offset” field enter 0x50C0;
- in the parameter field: 13697 (we take it from the Dash8PROInterface.txt file)



- Press “Confirm”. The setting must appear at the right pane of the window. Press OK.
- Now, power up the aircraft, wait until the flight instruments initialize and press “Num 7”. The YD enable message should appear on the advisory display.